

SOLARE **Sculpt**

Sculpt your perfect smile



GC

SOLARE **Sculpt**

SOLARE **Sculpt**, a high-strength, universal composite with **optimised handling** so clinicians can place beautifully adapted restorations with ease. Your **SCULPT**able composite for every need.

HIGH STRENGTH
universal composite for
all cavity classification

INVISIBLE RESTORATIONS

SINGLE SHADE SIMPLICITY
with benchmark aesthetics



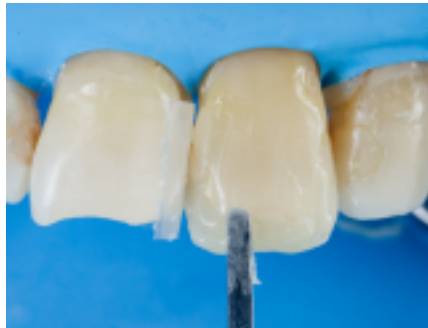
SELF POLISHING
and fast finishing

OPTIMISED HANDLING

BEAUTIFUL GLOSS
finish that lasts

SOLARE **Sculpt** gives you total control over your results with its **smooth, non-sticky** consistency and **3x more** working time for a well sculpted restoration!

SOLARE **Sculpt** is the **smart solution** for your everyday restorations - **simple and versatile**, use it anywhere: anterior or posterior, any cavity classification.



Dr. RL Halili-Castillo, Philippines

SOLARE **Sculpt** single shade simplicity

SOLARE **Sculpt** features GC's smart light scattering technologies developed to give you absolute simplicity: **Invisible restorations with just one shade!**

Can you see the margins?



Dr. Graeme Milichich, New Zealand

This case of diastema closure using shade A2 highlights SOLARE **Sculpt**'s excellent single shade, **chameleon shade match** to the tooth.



SOLARE **Sculpt** allows **easy shaping and sculpting**, thanks to SOLARE **Sculpt**'s superior handling.



A **self-shining effect** enables simple finishing and polishing to bring the restoration to a **beautiful gloss** that will continue to increase over time.

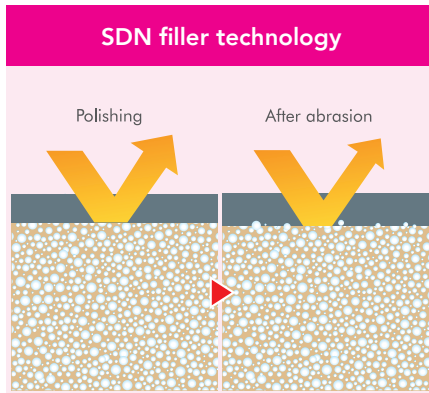


Dr. RL Halili-Castillo, Philippines

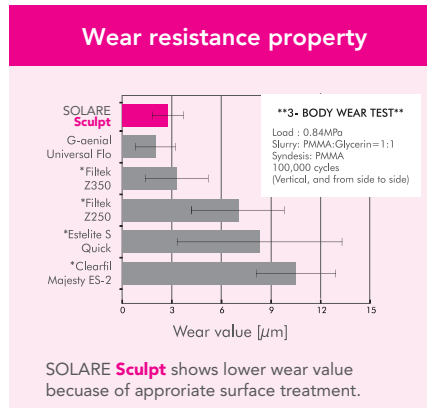
GC's pioneering light-scattering filler technologies

SOLARE **Sculpt** incorporates three unique filler technologies **Single Dispersed Nanofillers (SDN)**, **Full-coverage Silane Coating (FSC)** and **High-performance Pulverised CERASMART (HPC)**.

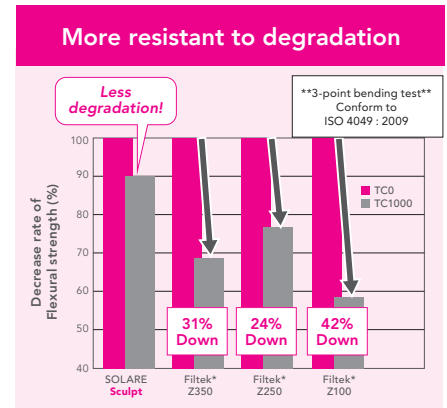
The combination of these technologies allows you to sculpt beautiful high gloss aesthetic restorations with **benchmark strength, wear resistance and durability**.



After abrasion, surface property is kept at a constant level because of homogeneous dispersion of nano-filler.

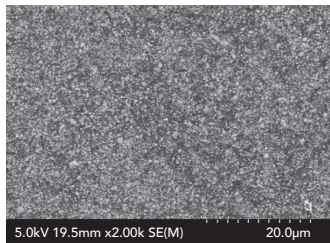


* Not trademarks of GC Corporation

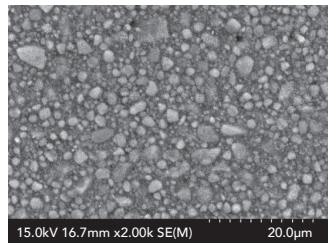


* Not trademarks of GC Corporation

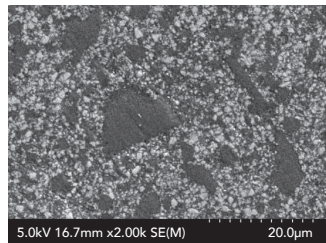
SOLARE **Sculpt** has 300nm strontium nano ceramic fillers which are homogenously dispersed and individually silane treated. This strengthens the adhesion between nano ceramic and resin matrix for high flexural strength and a beautiful high gloss finish.



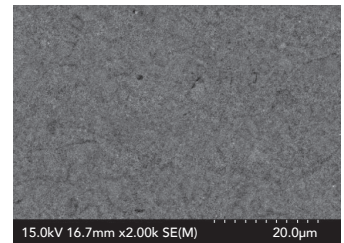
SOLARE **Sculpt**



*Filtek Z350



*Clearfil Majesty ES-2



*Estelite Σ Quick

* Not trademarks of GC Corporation

Brilliant aesthetic invisibility

SOLARE **Sculpt**'s light-scattering technologies give amazing chameleon and blending effect to consistently give you invisible margins and beautiful restorations.

SOLARE **Sculpt** ensures that just four shades will cover all your single shade restorative needs!



SOLARE Flo

SOLARE Flo is an integral part of the SOLARE **Sculpt** range of restorative materials.

A flowable with impressive strength

Innovation in filler technology gives you a full strength composite in a flowable consistency. Designed for traditional flowable applications but strong enough to be placed in any cavity classifications.

The perfect partner for all your packable composite restorations.



Lining
or base



Filling
undercuts



Tunnel
restorations



Fissure
filling



M.I.
restorations



Class V
restorations

High Radiopacity

Perfect for defining the cavity outline in radiographic images for direct or indirect procedures.

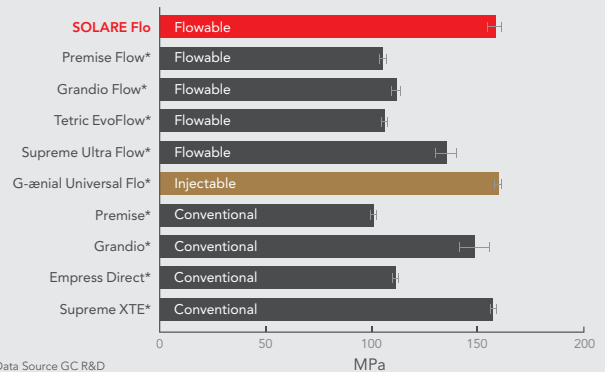


Radiopacity of enamel:
190-210%AI

SOLARE Flo restoration:
303% AI at 1 mm and
284% AI at 0.5mm thickness*

Dr. A. Coryn, Belgium

Flexural Strength



* Not trademarks of GC Corporation

SOLARE UNIVERSAL BOND

One bonding agent for **all etching modes**



Self-etch



Selective-etch

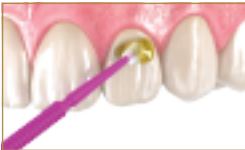


Total-etch



Quick, simple and efficient

1 Apply SOLARE UNIVERSAL BOND to the tooth surface



2 Leave undisturbed for 10s



3 Dry thoroughly for 5s under maximum air pressure



4 Light Cure for 10s



Less than 30s



Superior Bond Strength

The superior bond strengths and durable adhesion of SOLARE UNIVERSAL BOND is attributable to its unique formulation, with two clinically proven functional monomers, 4-MET and phosphoric acid monomer.

No post-operative sensitivity

Immediately following application to exposed dentine, SOLARE UNIVERSAL BOND will stop fluid movement in the dentinal tubule, sealing the dentine and preventing sensitivity.

Proven clinical performance

A four-year evaluation of two all-in-one adhesives in Class II restorations showed **100% success rate** for SOLARE UNIVERSAL BOND.

* Four-year evaluation of two all-in-one adhesives in class II restorations N. Tsintsadze, C. Goracci, A. Vichi, M. Garcia, and M. Ferrari. Abstract 531- IADR Firenze 2013, Italy



SOLARE Sculpt

Shade: A1, A2, A3, A3.5

Content per syringe: 1.9g/1mL

SOLARE Flo

Shade: A1, A2, A3, A3.5

Content per syringe: 1.0g/0.56mL

SOLARE UNIVERSAL BOND

1 bottle 2.5mL



GC Asia Dental Pte Ltd
11 Tampines Concourse #03-05
Singapore 528729

T: +65 6546 7588
F: +65 6546 7577
sea.gcasiadental.com