

G-Premio BOND



Introducing
a **premium**
bonding experience

GC

The world's most clinically successful adhesive is now even better! Introducing G-Premio BOND.

G-BOND has proven to be the world's most clinically successful adhesive with an annual failure rate of just 1.3 restorations per 100 restorations placed.

This clinical success clearly endorses G-BOND's formulation – designed for **durability through chemical bonding**, using a more hydrophobic, **non-HEMA containing** self-adhesive resin.

New G-Premio BOND is a no compromise, one-component, light-cured universal adhesive that delivers a bonding experience like no other. It offers outstanding performance in all etching modes and all clinical situations.

TOP 10 BONDING AGENTS

	Adhesive (manufacturer)	Annual Failure Rate	Number of clinical trials
1	G-BOND (GC)	1.3	7
2	Adper Scotchbond 1 XT (3M ESPE)#	1.4	5
3	Optibond FL (Kerr)#	1.8	6
4	Clearfil SE Bond (Kuraray Noritake)#	2.2	12
5	Clearfil Liner Bond (Kuraray Noritake)#	2.2	3
6	Adper Prompt L-Pop (3M ESPE)#	2.3	7
7	Clearfil S3 Bond (Kuraray Noritake)#	2.6	7
8	Adper Easy Bond (3M ESPE)#	3.2	3
9	XPBond (Dentsply DeTrey)#	3.5	5
10	Adhese (Ivoclar Vivadent)#	3.6	3

Ranking is based on average annual failure rate (AFR) reported from a minimum of 3 independent clinical trials** for adhesive performance in non carious cervical lesions (NCCL).

Not trademarks of GC Corporation; ** Clinical effectiveness of contemporary adhesives for the restoration of non-carious cervical lesions. A systematic review. M. Peumans, J. De Munck, A. Mine, B. Van Meerbeek. Dental Materials 30 (2014) 1089-1103



Enjoy a premium bonding experience like no other!

Universal etching modes

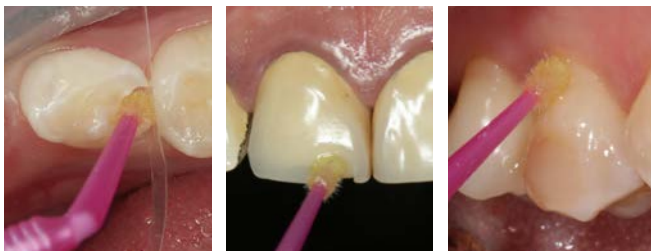


Self-etch

Selective-etch

Total-etch

Universal indications



Direct bonding*

Repair cases*

Hypersensitivity treatment**

Universal advantages

- Fast and simple, no rubbing or complex application procedures
- Chemically bonds within the first few seconds of application
- Visible during application, invisible after light-curing
- Wets the tooth just like water
- Perfect margins
- No patient discomfort
- **With an award winning bottle design**
The new bottle for G-Premio BOND is the Worldstar Winner 2019 of the WorldStar Packaging Awards in the Medical and Pharmaceutical category.†



* Dr S. Koide, Japan ** Dr E. Sauji, Japan

† <http://www.worldstar.org/winners/2019/medical-pharmaceutical>

Premium bonding with G-Premio BOND

Premium performance in any clinical setting

- An easy and forgiving application procedure with **minimal opportunity for handling errors**
- **Immediate chemical bonding**, so even a shortened application time will deliver high bond strengths **without needing to rub** the surface.
- The drying step is **highly reproducible**: 5 seconds, MAXIMUM air pressure
- A higher content of photo-initiator gives **more efficient light-curing**
- The fast, 25 sec self-etch application and chemical adhesion is **perfect for paediatric bonding or clinical cases where moisture control is challenging**
- Its yellow colour prior to light-curing gives **visual control of application**
- **Stable formulation** with a 2-year shelf life and **no refrigeration required**



Yellow on application

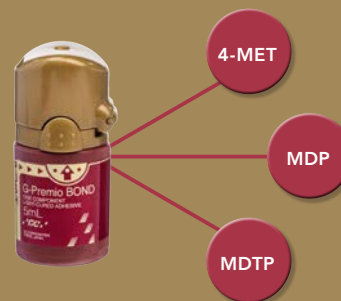


Invisible after light-curing

Dr S. Köken, Turkey

Premium adhesive bond strengths

- **Exceptional bond strengths** to enamel and dentine, regardless of the etching mode
- **4-MET, MDP and MDTP** universalise its bonding capabilities, providing strong adhesion to: GIC, metals (including precious), composites, zirconia and alumina
- Combines with G-Multi Primer for **optimum adhesion** to glass ceramics



Premium comfort for your patients

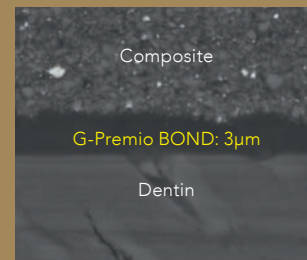
- Applies like no other bond, with **exceptional wetting characteristics**
- Has an **innate ability to penetrate** and form an immediate chemical bond
- **Eliminates patient discomfort**
- Treatment option for **cervical hypersensitivity**



GCC R&D

Premium margin aesthetics

- Forms an ultra-thin, **hydrophobic bond layer** to deliver invisible margins
- All water is removed from the bond layer during air drying, to ensure bond durability and a **very low 3µm film thickness**.
- Smart filler technology produces a **high filler density** in a fluid consistency bond
- Enhanced photo-initiators ensure a **stronger bond layer** after light-curing
- **HEMA-free**



GCC R&D

Premium value

- Unique silicon bottle gives **total control** over dispensing
- A thin nozzle design minimises material wastage and guarantees **up to 300 applications per 5ml bottle**



G-Premio BOND direct bonding technique

A simple application technique with immediate adhesion and high bond strengths provides an ideal platform for clinical success in direct bonding procedures.



1. Select preferred technique. Etch for 10-15s, rinse & dry.



2. Apply **G-Premio BOND** and wait for 10sec.



3. Dry for 5sec at **MAX** air pressure.



4. Light-cure for 10sec.

G-Premio BOND repair application technique

G-Premio BOND enables excellent adhesion to all substrates after thermocycling, recognising that the use of a separate primer (G-Multi Primer) together with G-Premio BOND is essential on glass ceramics to ensure durable adhesion.



1. Roughen the surface; Rinse and dry.



2. If there is a glass ceramic surface, apply **Ceramic Primer II** and dry.



3. Apply **G-Premio BOND** to all surfaces to be repaired and leave for 10sec.



4. Dry for 5sec at **MAX** air pressure.



5. Light-cure for 10sec.

G-Multi PRIMER uses 3 different chemical and bonding agents to ensure perfect adhesion to ALL substrates. Formulated for stability and durable adhesion. It has a 2 year shelf life and does not require refrigeration.



Q&A

What is the working time of G-Premio BOND?

The working time of G-Premio BOND is 7 minutes from dispensing time, in the dedicated despending dish, or 5 minutes in a flat dish.

Why do we recommend using a separate silane for repair of ceramics?

To bond to ceramics, a silane coupling agent is always needed to achieve a stable bond. In recent times some manufacturers have incorporated silane into universal adhesives but the resulting bond to ceramics has not proven to be durable*. To ensure the most durable adhesion to ceramics, G-Premio BOND does not contain silane and the prior application of a separate silane (eg. G-Multi PRIMER) is required.

How can G-Premio BOND achieve good bond strength values even with a very short application time?

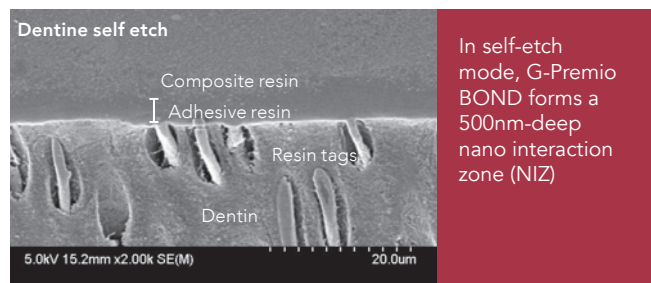
Thanks to a new formulation, G-Premio BOND displays a faster dissolution of the smear layer and improved infiltration. This enables the bonding agent to achieve sufficient bond strength to both enamel and dentin even with a very short application time, regardless of the etching mode.

What is the effect of G-Premio BOND on hypersensitive surfaces?

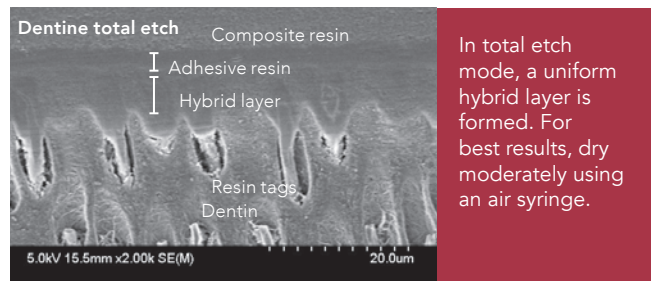
G-Premio BOND fills and covers the dentinal tubules, which prevents dentin hypersensitivity.

Does G-Premio BOND perform well in all etching modes?

Yes, G-Premio BOND presents very good bond strengths to both dentin and enamel in self-etch, selective etch and total-etch modes. It is fully compatible with all techniques.



Source: GCC R&D



Do not over-dry as this could collapse the collagen fibres. Do not use a wet bonding technique. Source: GCC R&D

*Yoshihara K, et al. Effectiveness and stability of silane coupling agent incorporated in 'universal' adhesives. Dent Mater (2016)

G-Premio BOND Refill

1 x 5mL bottle of G-Premio BOND



Since 1921
Towards Century of Health

GC Asia Dental Pte Ltd
5 Tampines Central 1,
#06-01, Tampines Plaza
Singapore 529541

T: +65 6546 7588
F: +65 6546 7577
sea.gcasiadental.com