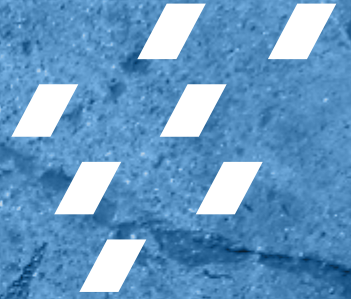


# FLEXCEED

VINYL POLYSILOXANE IMPRESSION MATERIAL



EXCEEDS YOUR  
EXPECTATIONS

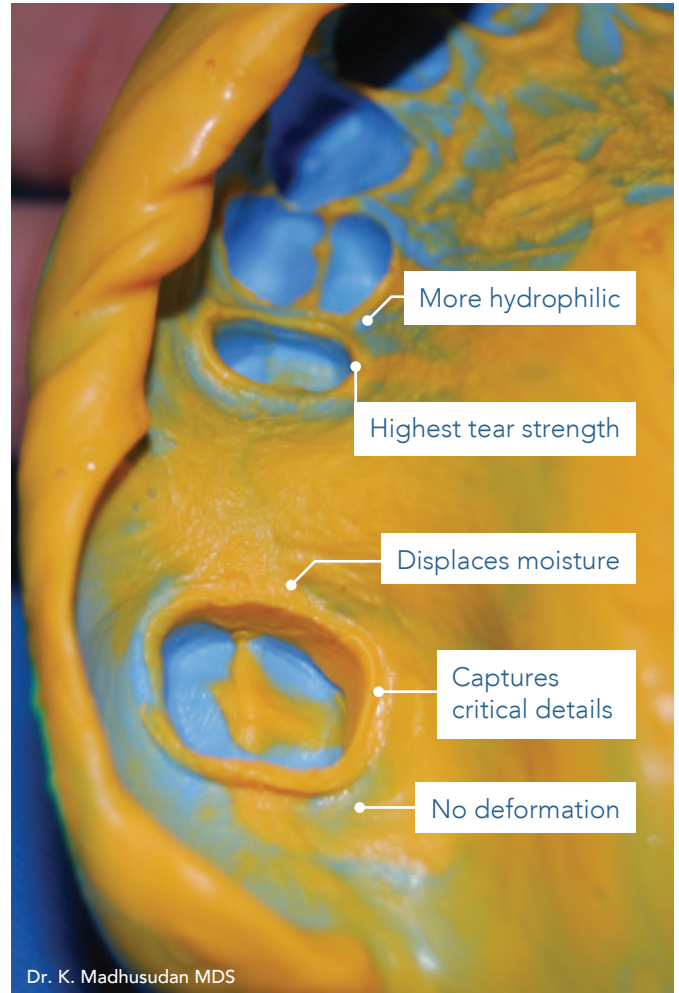
*GC*

# FLEXCEED

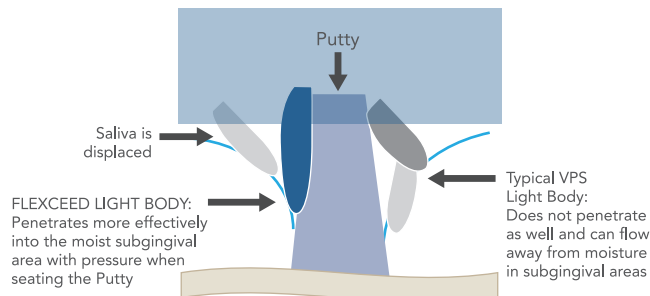
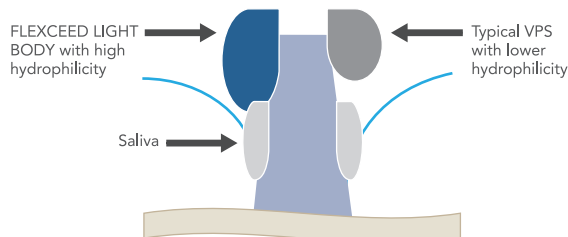
## because FIRST IMPRESSION lasts

GC introduces **FLEXCEED**, a new vinyl polysiloxane impression material that is **affordable** yet **accurately replicates the highest level of detail** for your crown and bridge restorations.

**FLEXCEED** helping you achieve impressions that will exceed your expectations.



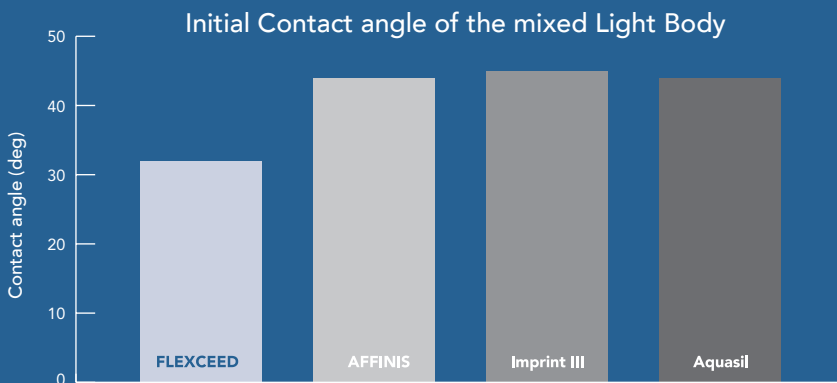
# Predictable impression under all conditions



**FLEXCEED**, with its **lowest contact angle**, displaces moisture and flows into subgingival areas rather than flowing away to mucosal surfaces, thus producing **accurate** impression detail.

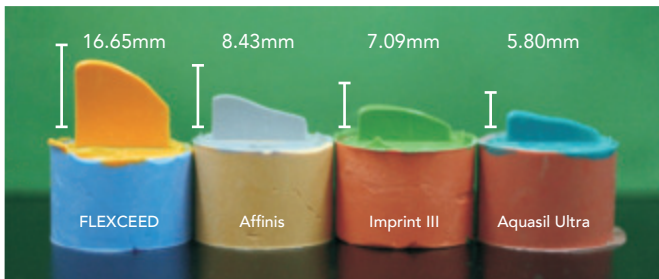
## FLEXCEED LIGHT BODY is more hydrophilic

The initial contact angle of a water droplet on an impression material helps measure the ability of a material to wet surfaces.



# FLEXCEED is the optimum putty-wash impression material

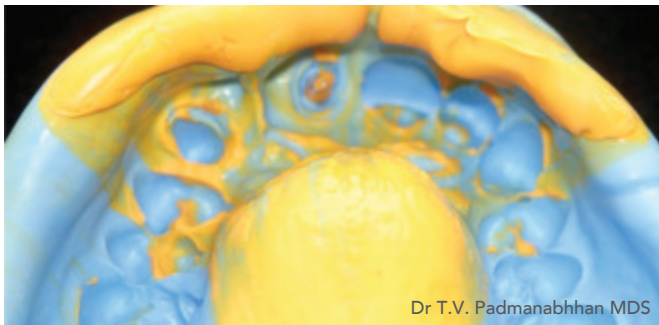
FLEXCEED LIGHT BODY flows beyond previous standards.



GC Corporation R&D Department

The Shark Fin test measures the ability of an impression material to flow under pressure with the use of a special instrument. FLEXCEED exhibits the highest “fin” amongst other VPS materials proving its flowability and excellent reproduction of detail.

FLEXCEED PUTTY offers exceptional reproduction of detail.



Dr T.V. Padmanabhhan MDS

FLEXCEED PUTTY is designed to be soft and easy to mix.

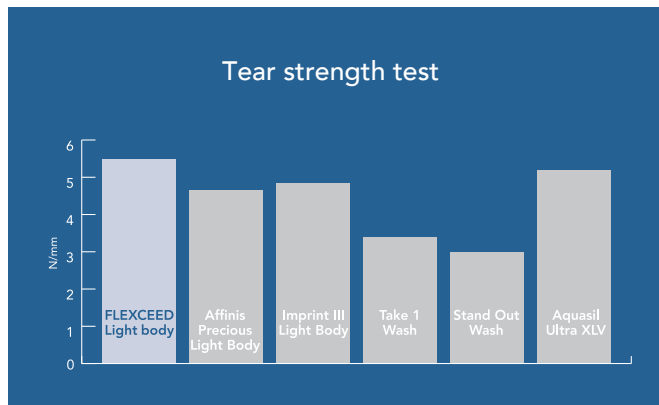
FLEXCEED exceeds the performance of other impression materials

- **Better reproduction detail** with two viscosities (Putty & Light Body)
- Exhibits pseudo-plastic properties for **precision** which is not found in alginates
- **Superior tear strength** than any other VPS material
- **Better dimensional stability** – multiple models can be poured up to two weeks
- Good **hydrophilicity**
- **Compatible** with gypsum products
- **Superior wetting** characteristics ensuring gypsum working cast is hard with smooth surface
- Can be **subjected to cold sterilization** without compromising the details and dimensional stability of the impression

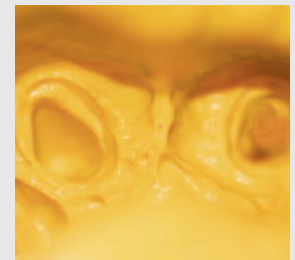
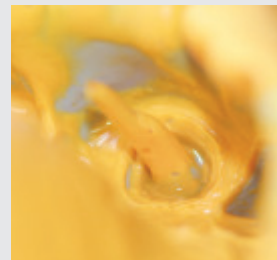
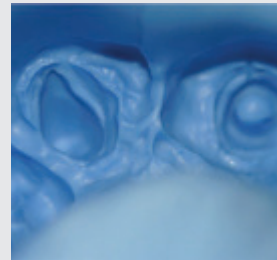
# Impression you take just once, all the time.

FLEXCEED exhibits the highest tear strength to give an accurate impression detail everytime.

The subgingival and interproximal regions of the impression are often very thin and can tear during the removal of the impression. FLEXCEED has been tested to have the highest strength to resist tearing in comparison to other vps impression materials.



GC Corporation R&D Department



Radicular impression for CAST POST restoration of tooth  
No. 21 Putty – light body wash, single impression technique  
– Dr T.V. Padmanabhhan MDS

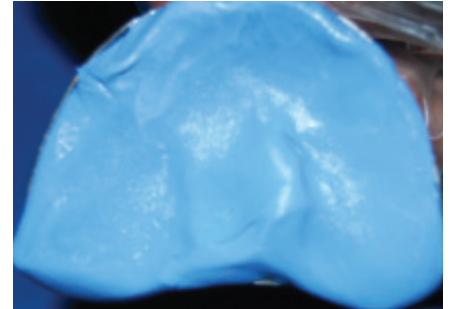
## Single step putty wash impression



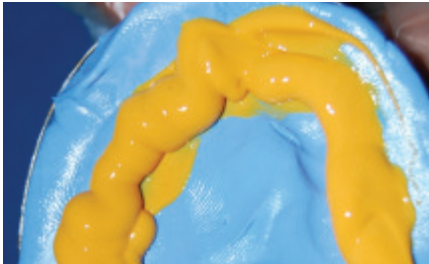
Take equal quantities of FLEXCEED base & catalyst using the prescribed scoop.



Knead the FLEXCEED base & catalyst until a uniform blue color is achieved



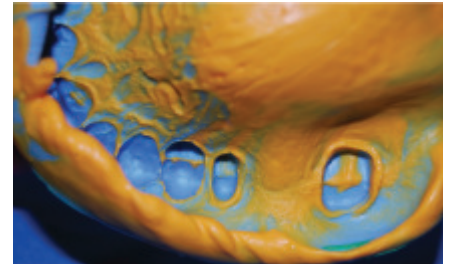
Load the FLEXCEED putty mix on the tray



Inject the FLEXCEED light body onto the putty mix making sure that the nozzle remains immersed to prevent air entrapment

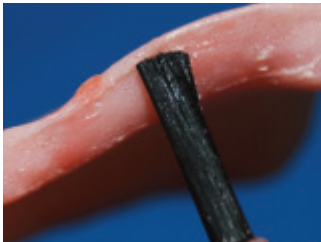


Using the intra-oral tips, inject the FLEXCEED light body directly around the prepared tooth

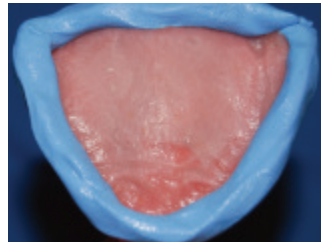


Final impression is easy to read due to the contrasting colour of FLEXCEED

## Impression for complete denture



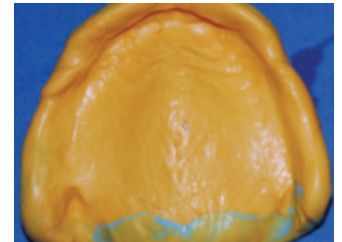
Apply GC tray adhesive



Border moulding using FLEXCEED putty



FLEXCEED light body is loaded onto the individual tray



Completed upper impression.

Case and photos courtesy of Dr. K. Madhusudan MDS

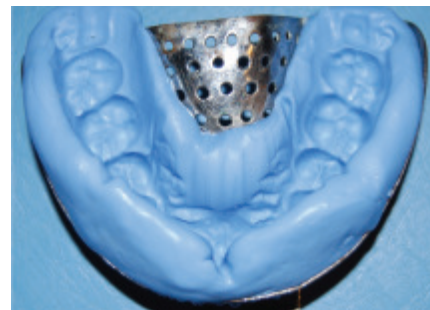
## Double step putty wash impression



Prepared tooth for crown



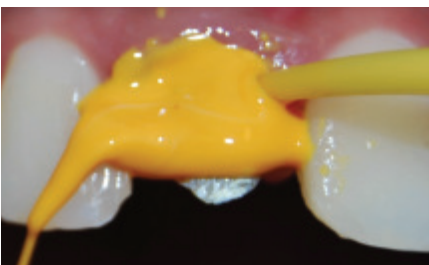
After applying GC tray adhesive, FLEXCEED putty is loaded on the stock tray



Putty impression is taken



Using the putty cutter, create a space for the light body



Inject the FLEXCEED light body around the prepared tooth, then immediately re-seat the putty tray impression

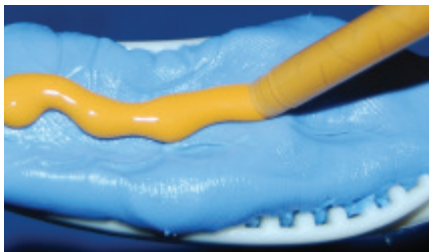


Final impression using FLEXCEED

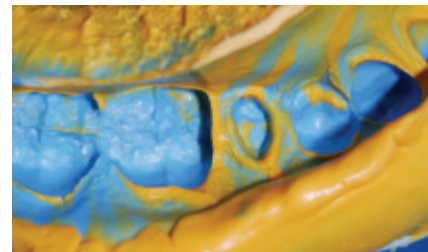
## Dual Arch impression



FLEXCEED putty is loaded onto a dual arch tray



FLEXCEED Light Body is injected over the putty then impression is taken



Final impression.

Case and photos courtesy of Dr. K. Madhusudan MDS

## FLEXCEED KIT

Contains:

PUTTY

1x Base - 500g (278mL)

1x Catalyst - 500g (278mL)

LIGHT BODY

2x Cartridges - 78g (50mL)

8 Mixing Tips (Pink)

8 Intraoral Tips

## FLEXCEED PUTTY

Contains:

1x Base - 500g (278mL)

1x Catalyst - 500g (278mL)

## FLEXCEED LIGHT BODY

Contains:

2x Cartridges - 78g (50mL)

8 Mixing Tips (Pink)

8 Intraoral Tips



GC Asia Dental Pte Ltd  
11 Tampines Concourse #03-05  
Singapore 528729

T: +65 6546 7588  
F: +65 6546 7577  
[sea.gcasiadental.com](http://sea.gcasiadental.com)