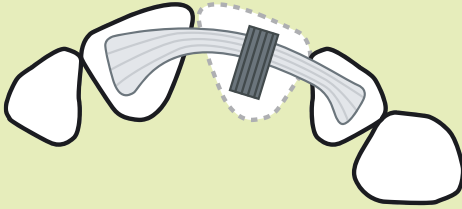


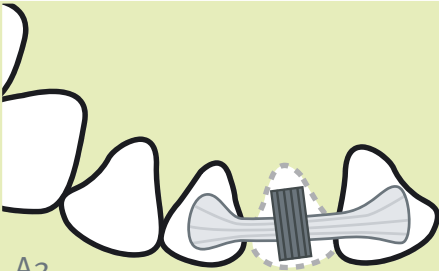
Anterior region

everStick®C&B



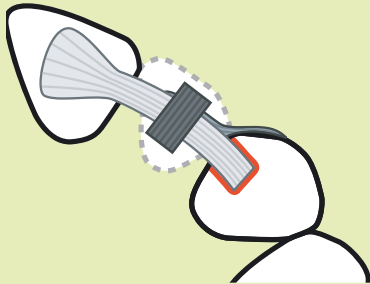
A1

Missing tooth: D.21
Supporting teeth: dd.11, 22 both intact
Fibre frame:
1 fibre D.11 surface, D.22 surface
Transverse fibre: D.21 1 piece



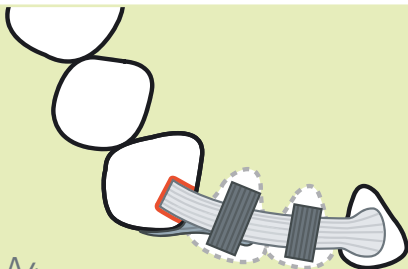
A2

Missing tooth: D.31
Supporting teeth: dd.32 intact, 41 intact
Fibre frame:
1 fibre D.32 lingual surface, D.41 lingual surface
Transverse fibre: D.31 1 piece



A3

Missing tooth: D.22
Supporting teeth: D.21 intact, D.23 old filling
Fibre frame:
1st fibre D.21 surface, D.23 inlay
2nd fibre Short fibre from D.23 buccal surface to 1st fibre
Transverse fibre: D.22 1 piece

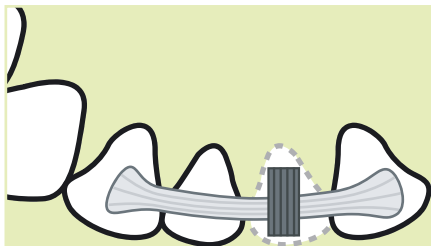


A4

Missing teeth: dd.41, 42
Supporting teeth: dd.31 intact, 43 old filling
Fibre frame:
1st fibre D.31 surface, D.43 inlay
2nd fibre Short fibre from D.43 buccal surface to 1st fibre
Transverse fibres: D.41 1 piece, D.42 1 piece

Anterior region

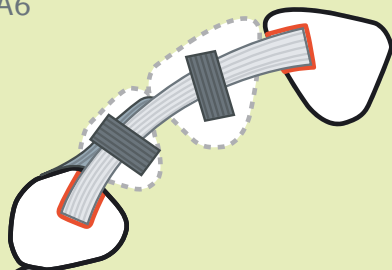
everStick®C&B



A5

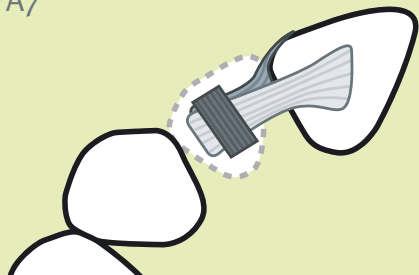
Missing tooth: D.31
Supporting teeth: dd.32, 41, 42
 (periodontal mobility)
Fibre frame:
1 fibre Surface retained splint,
 dd.32, 41, 42
Transverse fibre: D.31 1 piece

A6



Missing teeth: dd.11, 12
Supporting teeth: dd.21, 13 old fillings
Fibre frame:
1st fibre D.21 inlay, D.13 inlay
2nd fibre Short fibre from D.13
 to fibre frame
Transverse fibres: D.11 1 piece, D.12 1 piece

A7



Missing tooth: D.12
Supporting tooth: D.11 intact
Fibre frame:
1st fibre D.11 surface (cantilever)
2nd fibre D.11 labial
Transverse fibre: D.12 1 piece



Important steps!

- Press the fibre labially to make space for the transverse fibre and the composite.
- Position the fibre frame as incisally as possible to maximize the strength.
- Attach the transverse fibre with flowable composite on the occlusal side to strengthen the composite pontic.

ES 5:2016 updated 2011-10