



Natural fit
and
flexibility



CERASMART™270
from GC

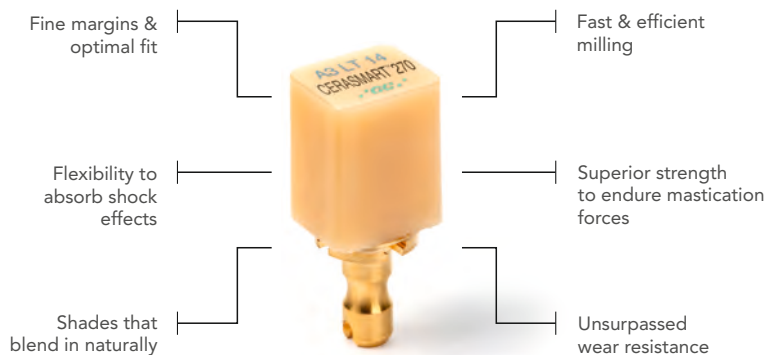
Force Absorbing Hybrid Ceramic
CAD/CAM Block



CERASMART™270 is an aesthetic hybrid block made to provide fast and long lasting clinical success.

- Thanks to the newly developed “Full Coverage Silane Coating” (FSC) with improved nanofiller technology, CERASMART™270 offers high physical and aesthetic properties.
- The milling is fast and efficient, making it possible to create a qualitative restoration with fine margins and optimal fit in a very short time.
- Additionally, it can be polished or characterised for more vibrant aesthetics. CERASMART™270 is the right block to use, be it for a quick onlay or a challenging wear case.

For restorations that pass the test of time

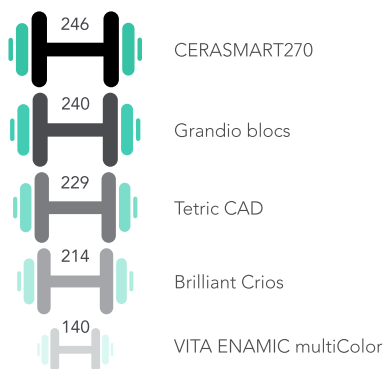


Indications:

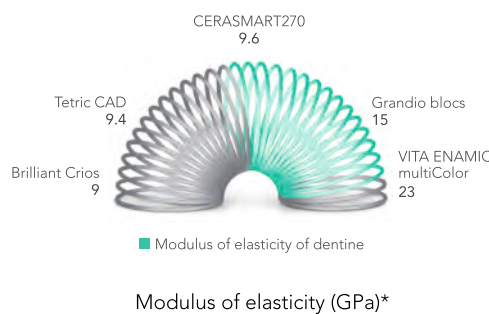
- **Metal free indirect restorations**
 - full crown
 - onlay
 - inlay
 - laminated veneer
- Implant supported crown
- The High Translucency (HT) blocks are mainly used to replace enamel: inlays, onlays, veneers, partial and full crowns.
- The Low Translucency blocks are intended for the replacement of dentin and enamel structures: to mask discoloured preparations, in particular for crowns.

Blending Strength & Flexibility together

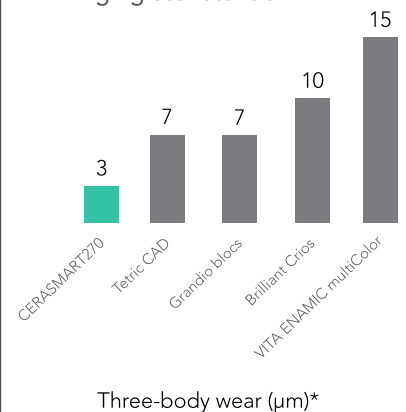
- Superior strength to endure mastication forces
- High filler rate thanks to FSC technology
- Improved flexural strength for more durable restorations
- High resistance to fracture



- Flexibility to absorb shock effects
 - Less stress peaks during chewing
 - Decreased risk of material fatigue
 - Extremely well suited for implant restorations



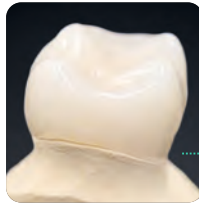
- Wear resistance for long lasting restorations
 - Very low wear
 - Ideal for bruxist patients
 - High gloss retention



*Source: GC R&D, Japan, 2018. Data on file

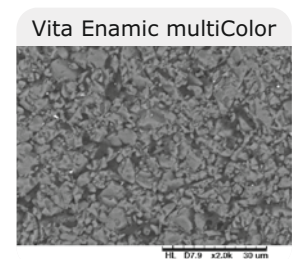
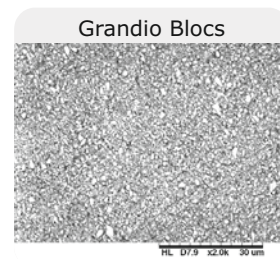
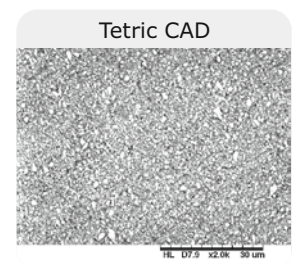
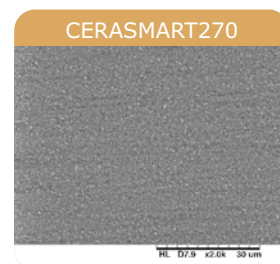
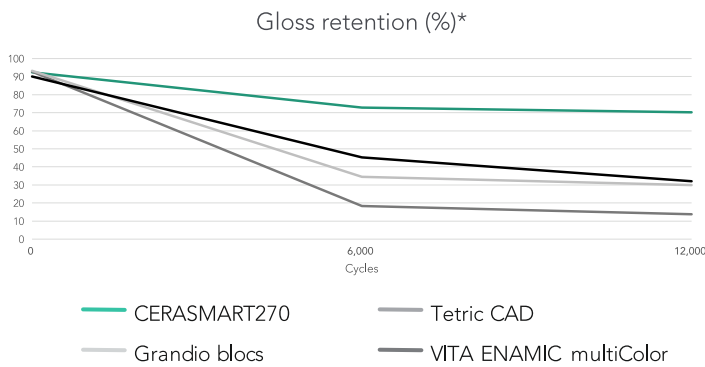
Aesthetics and Precision

- Sharp margins that ensure a smooth transition



After quick and easy milling without chipping, you are guaranteed very precise and naturally smooth margins.

- Superior polishability and gloss retention



SEM images of CERASMART270 in comparison to competitors*

Thanks to its ultrafine glass filler, CERASMART™270 is very easily polished and maintains a much higher gloss rate than its competitors for the same amount of time.

- Shades that blend in naturally



For a **natural smile** using only one shade.



Courtesy of MDT C. Hannker, Germany

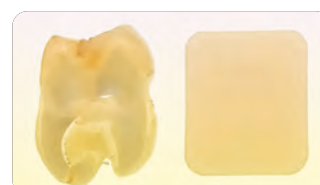
- Optimal fluorescence and translucency

Natural tooth CERASMART270



Beautiful colours for a natural appearance. Warm, lifelike shades with an **optimally balanced fluorescence** and **opalescence**.

Natural tooth CERASMART270



Beautiful and Easy

Choose your finishing path

Characterisation

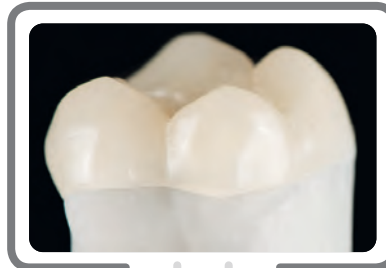
Because everything looks better in colour

Add character to your restoration with the stroke of a brush using OPTIGLAZE color, a ready to use and wear resistant glossy coating.

Polishing

Fast and easy polishing

An impressive gloss level can be obtained by just some simple polishing steps.



You can choose from a wide variety of colours or use the Clear glaze to add gloss only.



Polishing can be done with your standard polishing wheels and burs.

Easy and fast pre-treatment and luting options

Etch or Sandblast



CERASMART270 is the only hybrid ceramic material that can be etched with hydrofluoric acid or can be sandblasted.

Silane or MDP



In both cases, the use of the universal G-Multi PRIMER will always be a good choice, since it contains both silane and MDP.

Pre-treat the tooth



Choose your etching mode depending on the presence of enamel and dentin on your preparation. Apply a bonding agent such as G-Premio BOND.

Lute



Use an adhesive luting agent such as G-CEM LinkForce.

Courtesy of Dr. P. Dimitrov, Bulgaria

Luting options for restorations that last



G-CEM LinkForce

Universal dual cure resin cement with trusted performance.



Whenever in doubt the GC Luting App is there to help you for a correct protocol.

Precision that lasts.

Aesthetics that do not fade.

Increase of the vertical dimension

With its high flexural strength and breaking energy, CERASMART™270 is perfectly suited to solve challenging occlusal situations. Its balanced surface hardness will be especially beneficial in reducing the wear of the opposing dentition, while ensuring a long-lasting gloss of the restoration.



Courtesy of Dr. C. Moussally, France

Single visit restorations

With CERASMART™270 you can create durable aesthetic restorations with optimal fit in a single visit. The restoration will be milled in a few minutes and is very friendly to your milling burs.

Replacement of a large composite restoration with parapulpal pins

The right choice for large, load-bearing restorations.



Courtesy of Dr. D. Gerdolle, Switzerland

Implant-supported crown

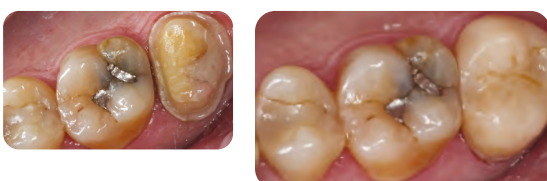
The elasticity of CERASMART™270 is especially useful when placing an implant supported crown.



Courtesy of Dr. J. Tapia Guadix, Spain

Restoration of a second molar

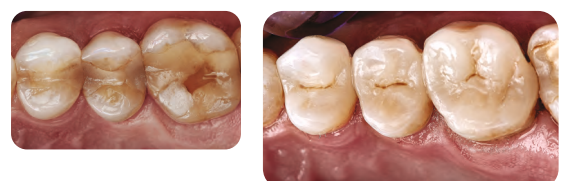
Natural blending with only one shade makes it a great material for a standard molar restoration.



Courtesy of Dr. Y. Roos, Spain

Restoration of a quadrant

Perfect for creating several restorations in one appointment.



Courtesy of Dr. G. Witkowski, Poland

Shade range:

Choice of translucency to adapt to all preparations



CERASMART™270

CEREC - Qty.: 5 pcs.



CEREC		
Shade	Size	Ref.
A1 HT	14	0138F264-0010
A2 HT	14	0138F264-0020
A3 HT	14	0138F264-0030
A3.5 HT	14	0138F264-0040
B1 HT	14	0138F264-0050
A1 LT	14	0138F264-0060
A2 LT	14	0138F264-0070
A3 LT	14	0138F264-0080
A3.5 LT	14	0138F264-0090

Related Products



G-CEM LinkForce



OPTIGLAZE color



DIAPOLISHER Paste

DIAPOLISHER Paste, G-CEM LinkForce, G-Premio BOND, G-Multi PRIMER and OPTIGLAZE color are trademarks of GC.
Brilliant Crios, Grandio blocs, Tetric CAD, VITA Enamic multiColor and CEREC are not trademarks of GC.



GC Asia Dental Pte Ltd

5 Tampines Central 1
#06-01 Tampines Plaza 2, Singapore 529541
T: +65 6546 7588, E: gcasia@gc.dental, W: sea.gcasiadental.com