



GC FUJI IX Family

1

GLOBAL LEADER
IN GLASS IONOMER
TECHNOLOGY



**Over 500 million Fuji IX restorations
have been placed worldwide!**

a unique milestone for the world's most popular glass ionomer cement.

GC Fuji IX FAMILY

No compromise choice in Glass Ionomer Cements

A unique Glass Ionomer System setting the **GOLD** standard

1

A Strontium-based Glass Ionomer

All GC Glass Ionomers contains strontium glass. The strontium glass provides good radiopacity and snapset characteristics, unanimously preferred by clinicians around the world. Interestingly, strontium will mimic calcium in the formation of strontium hydroxyapatite and strontium fluoroapatite to affect internal remineralization within the tooth structure.

2

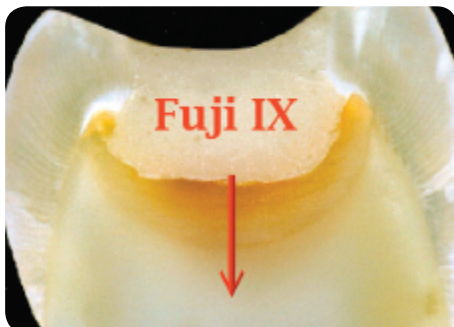
Surface Strengthening Effect

Research has shown that a strontium-based glass ionomer placed in calcium-containing environment (saliva) will result in calcium ion diffusing into the glass ionomer surface achieving a surface strengthening effect. All Glass Ionomers strengthens over time in saliva.

3

A Consistent Predictable Seal

All GC Glass Ionomers will display a glossy surface after mixing. This indicates sufficient free polyacrylic acid is available to begin the ion exchange process. The subsequent movement of ions between dentin, enamel and GC Glass Ionomer creates an ion exchange zone which chemically fuses them together. The resulting seal is consistent, predictable and long lasting.



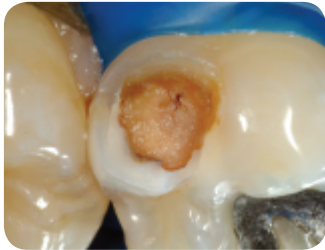
Fuji IX will help stimulate internal remineralisation releasing strontium and fluoride ions which contribute to the hardening process

Chemical exchange between glass ionomer restorations and residual carious dentine in permanent molars: An in vivo study. *Journal of Dentistry* 34 (2006) 608-613. Ngo H, Mount GJ, Morris M, McIntyre J, Tuisuva J, Von Doussa R.

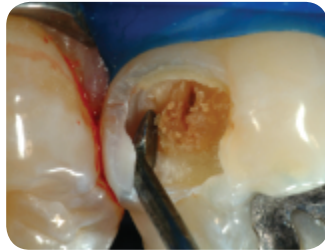
GC Fuji IX FAMILY

Award Winning Restoratives for Every Practice!

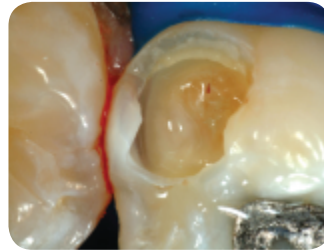
Clinical case by Prof H. Ngo



Initial lesion



Caries removal using spoon excavator

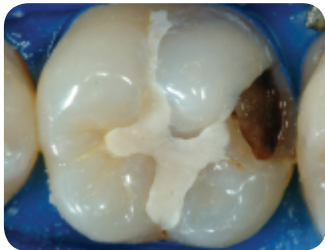


Prepared cavity

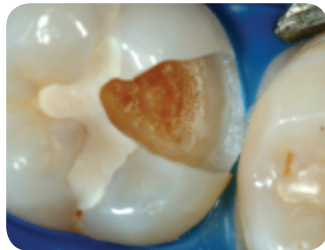


Fuji IX ART final restoration

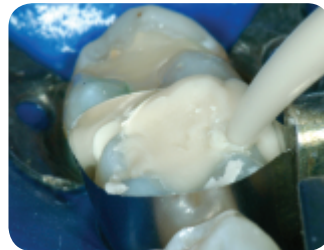
Clinical case by Prof H. Ngo



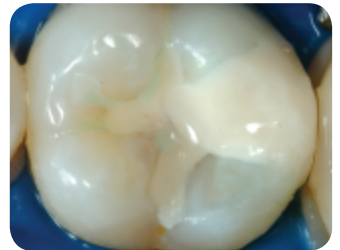
Initial lesion



2mm of sound margin left on enamel and dentine



Injection of Fuji IX GP Capsule

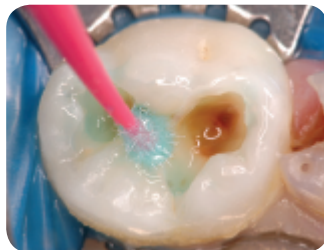


Immediate post op

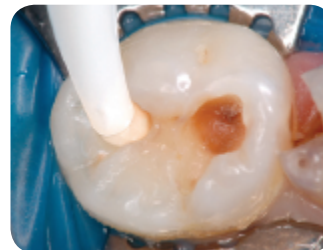
Clinical case by Dr J. Lucas



Cavity prep



Application of DENTIN CONDITIONER (optional)



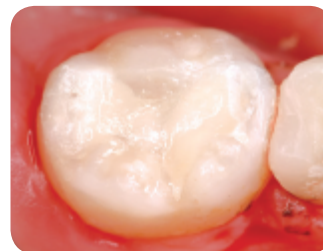
Injection of Fuji IX EXTRA capsule



Contour the surface



Application of G-COAT PLUS and light cure



Finished restoration

GC Fuji IX FAMILY

The most advanced formulation in the market!

Over 15 years of ongoing research and development and a genuine commitment to quality and consistency keeps Fuji IX out in front of its competitors.

A systematic review and over 440 research abstracts and papers have been published defining Fuji IX as the standalone benchmark for glass ionomer restorations.

Developed in collaboration with World Health Organization (W.H.O.) Dental Collaboration Center

Brought to you by GC — winner of the Japan Medal for Quality and the world's leading manufacturer of glass ionomer cements.

GC Fuji IX ART



GC Fuji IX 1-1

10g Powder, 6g Liquid, 2 x 2g
COCOA BUTTER

GC Fuji IX MINI PACK

5g Powder, 4g Liquid, 2g
COCOA BUTTER

GC Fuji IX GP



GC Fuji IX GP

Powder and Liquid

15 gm powder (A2, A3,
A3.5, B2) 6.4 ml liquid

GC Fuji IX GP Capsule

Box of 50 (0.14mL mixed
volume/capsule)

Available in A2, A3 &
A3.5 shades

GC Fuji IX GP FAST



GC Fuji IX GP FAST Capsule

Box of 50 (0.14mL mixed
volume/capsule)

Available in A2, A3 & A3.5 shades

GC Fuji IX GP EXTRA



GC Fuji IX GP EXTRA Capsule

Box of 50 (0.14mL mixed
volume/capsule)

Available in A2, A3 & A3.5 shades

G-COAT PLUS 4 mL bottle

GC Gold Label 9 EXTRA



GC Gold Label 9 EXTRA

IONOMER1-1 pack, 15g
Powder, 8g Liquid Shades:
A2, A3, A3.5



GC Asia Dental Pte Ltd
11 Tampines Concourse #03-05
Singapore 528729

T: +65 6546 7588
F: +65 6546 7577
sea.gcasiadental.com